



Southwest Suburban Sewer District

431 SW Ambaum Boulevard – Burien, WA 98166
Phone 206-244-9575 Fax 206-433-8546

"Dedicated to preserve the purity of your environment."

MEMORANDUM

To: Ron
From: Laura
Date: June 27, 2016
Subject: Latitude #209 DE

Ron,

Mark Christiansen, Bridge Development Partners, is requesting the board enter into a Developer Extension contract for the project described below. I have included the GIS aerial map of the location and associated white cards for mainline sewer access.

Project Description: Construction of an approximately 236,300 square foot cold storage warehouse facility.

Project Location: 1010 South 146th ST

Construction Timeline: June 2016 – June 2017

Please see attached white card and GIS aerial map of the proposed location.

Thank you,
Laura

RESOLUTION NO. 2016-18

A Resolution of the Board of Commissioners of Southwest Suburban Sewer District, King County Washington, confirming action taken by the District in the Execution of Developer Extensions.

WHEREAS, the District, has approved and authorized execution of Developer Extension Agreements; and

WHEREAS, the Board of Commissioners confirms by resolution its action taken in authorizing the General Manager to enter into contract with Mark Christianson, Bridge Development Partners, owner of Latitude #209 Developer Extension and to carry out the terms and conditions of the contract.

NOW, THEREFORE, BE IT RESOLVED, by the Board of Commissioners of Southwest Suburban Sewer District, King County, Washington as follows:

1. The action taken by the Board of Commissioners in authorizing the execution of the aforementioned Developer Extension as set forth herein and as reflected in the minutes of the District's regular meeting, are hereby confirmed.
2. The District's General Manager is authorized to fully implement this agreement and to enforce the terms and conditions of the contract.

ADOPTED by the Board of Commissioners of the Southwest Suburban Sewer District, King County, Washington at a regular meeting held on this ^{7th} ~~5th~~ day of July, 2016.
SMB

SOUTHWEST SUBURBAN SEWER DISTRICT
KING COUNTY, WASHINGTON

ATTEST:

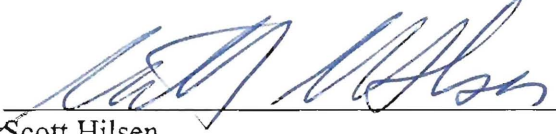
*Individual Commissioner's
Vote on Resolution*

In Favor of: _____
Opposed: _____
Abstained: _____



Susan Genzale
President and Commissioner

In Favor of: _____
Opposed: _____
Abstained: _____



Scott Hilsen
Vice-President and Commissioner

In Favor of: _____
Opposed: _____
Abstained: _____

William Tracy
Secretary and Commissioner

CERTIFICATE

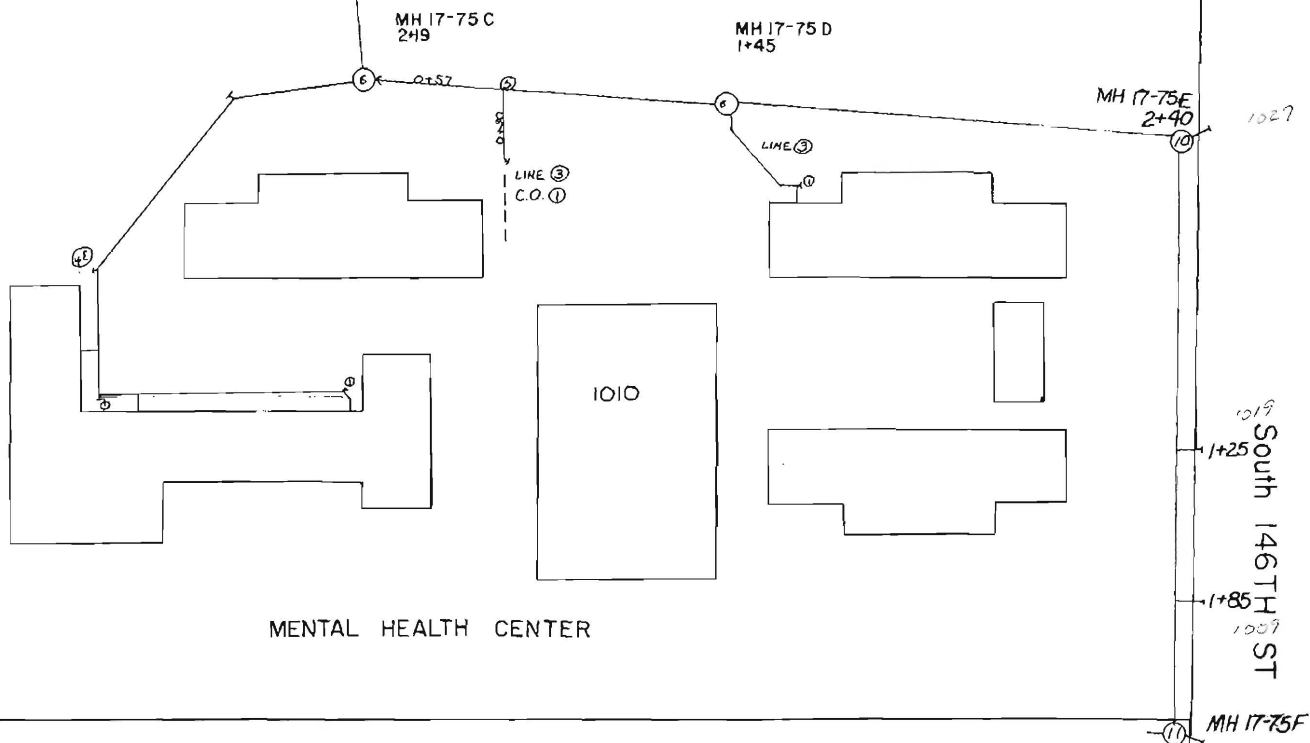
I, William Tracy, Secretary of the Board of Commissioners of Southwest Suburban Sewer District, King County, Washington, DO HEREBY CERTIFY that the foregoing resolution is a true and correct copy of Resolution 2016-18 of said Board, duly adopted at a regular meeting thereof held on the 5th day of July, 2016, signed by the members of such Board in attendance at such meeting and attested by myself in authentication of such adoption.

William Tracy
Secretary of the Board of Commissioners
Southwest Suburban Sewer District

ARD NO. 1000-
0431



South 146TH ST.



MENTAL HEALTH CENTER

1010

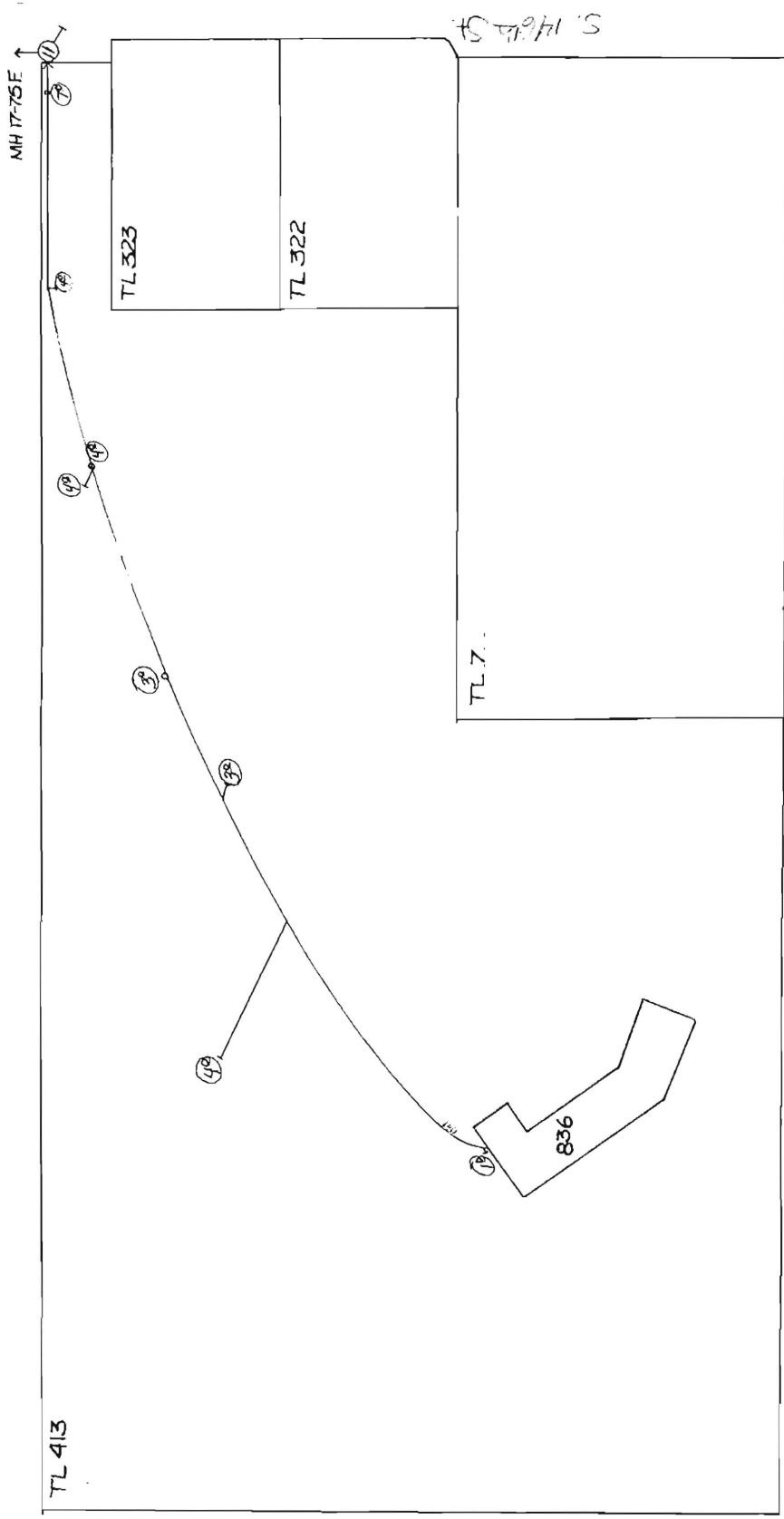
M.P.R. 117

	Grad.	Sewers	C.W.	Par.
IN NOS		Mental Health Dev. Est.		
S. D.'s		Gleave + Sons, 8" PVC 10-88		
OKS		L-27		

SOUTH 146TH

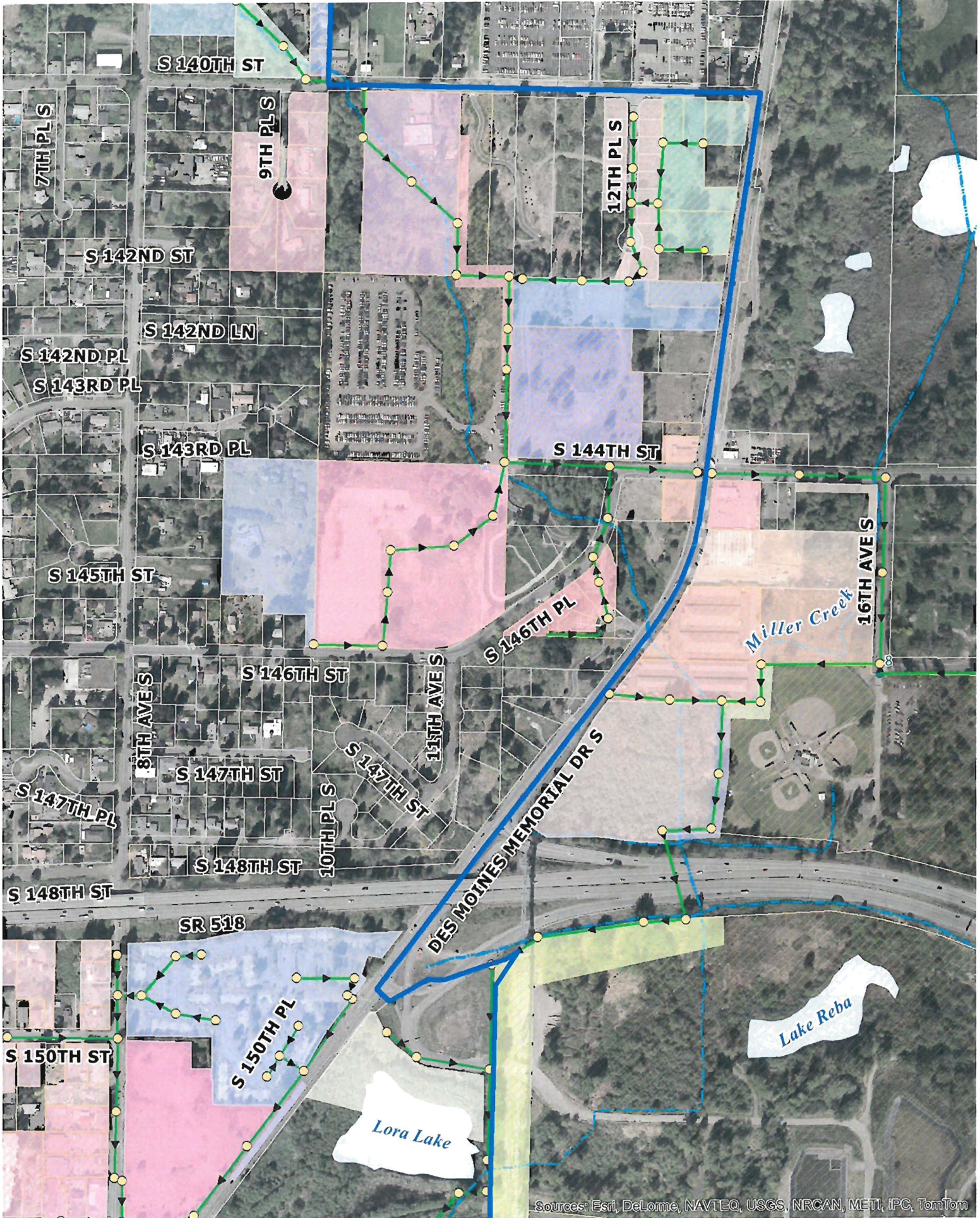
CARD NO: 836-100

1/2" = 100'



PLAN NO: *Sewer Layout* Grad. Sewers C/W Pav
 L 1 3 *150'* *150'* *150'* *150'*
 BOOKS *L-27*

150'



Sources: Esri, DeLorme, NAVTEQ, USGS, NRCAN, METI, IPC, TomTom