

# SOUTHWEST SUBURBAN SEWER DISTRICT

MAY 2009



## Ratepayer News

### 2009 SEWER DISTRICT UPDATE

#### Inside this issue:

<b>2009 Sewer District Update</b>	<b>1</b>
<b>Commissioner's Commentary</b>	<b>1</b>
<b>Your Sewer Dollars at Work: Pump Station Upgrades</b>	<b>2</b>

2009 has already been a busy time for the District. The first phase of the Evergreen Heights Project was completed last October, and the second phase is currently under construction with a projected completion date of May 31st. Many residents qualified for Community Development Block Grant funding and had their connection charges paid in full. The newly remodeled Pump Station #2 will handle the flow from the residents served in these areas.

Construction on ULID 79-P2 and the adjacent District exten-

sion began last June along 1st Avenue South in Des Moines. 106 homes are being served, with final completion expected in May.

The District is currently working on final design and bid specifications for the 4th & 5th phases of the Chelsea Park Pipe Rehabilitation Project. We will be using a trenchless method of construction referred to as cured-in-place for a majority of the project. There will be a few open excavations in the areas with the most severe pipe damage. The final phase is located between SW 130th & SW

136th Streets from 1st Avenue South to Ambaum Blvd.

We are also working on preliminary design for the Seahurst Beach sewer line rehabilitation, and have completed the removal of Pump Station #17 on 176th and 6th Ave South.

The Board is pleased to report that the Office of the State Auditor gave the District a "clean bill of health" with no problem areas.

Compost is being produced and is available "while supplies last". Call the compost facility @ 242-4128 for availability.

### COMMISSIONER'S COMMENTARY

Several people have recently asked me about the condition of our sewage pipes. They are worried that the pipes are in such poor shape that they must be replaced. Let me reassure you that we have an active pipe rehabilitation program and are evaluating all of our lines. In the Normandy Park area we have restored a significant portion of Miller Creek, enhancing our salmon hatchery operation as well as fish habitat. Burien has seen a major pipe rehabilitation effort in the Chelsea Park area, where we are continuing our work through Hazel Valley. We have even started a project to help Burien enhance Seahurst Park, including the slip-lining of our beach line. White Center, the oldest part of the District, has seen completion of rehab in Regal Heights, Marion Heights, the main line past Garrett (Hick's) Lake to Salmon Creek, the rebuilding of pump station #2 at Greenbridge, and the arrival of sewage service to Evergreen Heights.

Many people are worried about annexation and how it would affect their sewage service. Let me reassure you that none of the above projects will be affected by annexation. This August the upper Shorewood, Salmon Creek and Arbor Lake areas may be voting on joining

Burien. Such action would have little impact, fiscal or otherwise, on your sewage service. If annexation passes, we, your sewer district, will continue to serve you and any future rate increases will improve service, not line Burien or Seattle's pockets. And should Seattle annex any of the area, we have a letter of agreement that no assumption will be attempted, there will be no imposition of the Metro rate scale, and a franchise will be granted for us to continue service to our customers.

Overall, we remain committed to serving you and maintaining your system, district-wide!



**Commissioner  
Bill Tracy**

#### District Office:

431 SW Ambaum Boulevard  
Burien, Washington 98166  
Phone: 206-244-9575  
Fax: 206-433-8546

Forms can be downloaded from the District website to apply for the low income rate discount or to set up electronic bill-payer service:

**[www.swssd.com](http://www.swssd.com)**

You are invited to attend the monthly Board of Commissioners meetings at the District Office on the first and third Tuesdays of each month at 6:00 p.m.

#### Board of Commissioners:

Tony Genzale, President  
William Tracy, Vice-President  
Scott Hilsen, Secretary

## YOUR SEWER DOLLARS AT WORK

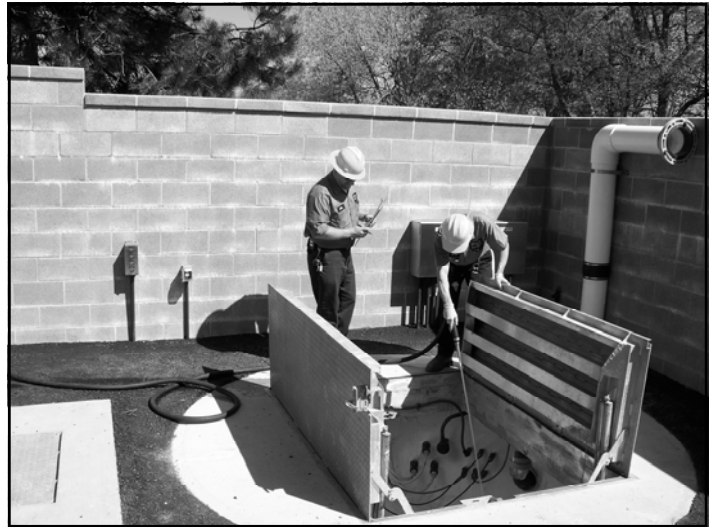
# PUMP STATION UPGRADES



The new pedestrian pathway running between Des Moines Memorial Drive and South 176th Street is shown above.

### PUMP STATION #2 REHABILITATION

The rehabilitation of Pump Station #2 located at 100th and 3rd Avenue SW has been completed. The project entailed installation of a new wet well, telemetry, and a short section of force main. The updated controls have redundancy provisions, and a new on-site emergency power generator with auxiliary connection in the event of failure was installed. As a result of the upgrades, the capacity of the station has been increased and will meet the demands of the new customers being served in the Evergreen Heights area, as well as future demands. The rehabilitation of this pump station will provide many years of reliable service to the area.



Sewer District Equipment Maintenance personnel Mike Wagner and Larry Zaragoza (l to r) work on Pump Station #2 at the Greenbridge site in White Center.

### PUMP STATION #12 REHABILITATION

The rehabilitation of Pump Station #12, located at 172nd Street and 23rd Avenue SW, was recently completed with the great cooperation of ratepayers adjacent to the station, who showed a great deal of patience with the construction process. The project included a complete electrical and mechanical upgrade, including pumps and controls. Updated controls have redundancy provisions, and an on site emergency power generator with auxiliary connection in the event of failure was installed. The infrastructure was rehabilitated, consisting of wet well/dry well restoration with corrosion protection. A station bypass in the unlikely event of a catastrophic failure was incorporated into the upgrades. A number of aesthetic improvements were made, including a control panel enclosure that matches the architecture of the residence, replacement of all brickwork surrounding the station, and landscaping using native shrubs & foliage. Special thanks to ratepayers Ray Prentice and Dwight Fagothey for their help with landscaping.